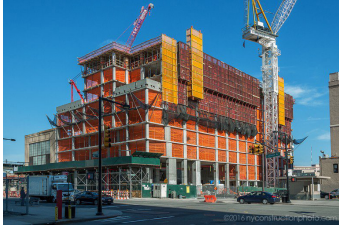


CASE STUDY

New York City Highrise Carpenters Local Union 212



28-02 JACKSON AVENUE QUEENS 1101 Tower A



A 45-story, 671-unit residential tower with ground-floor retail space. Approximately 594,000sq ft. and 504 feet tall.

**REINFORCED CONCRETE
SUPERSTRUCTURE
CONTRACTOR**

Pinnacle Industries II LLC

260 Park Ave
Harrison, NY
President: Joseph Mitrione
(914) 698-4405
jmitrione@pinnacle2.com

DEVELOPER

TISHMAN SPEYER
45 Rockefeller Plaza
New York, NY 10111
212-715-0390
Chris McCartin

GENERAL CONTRACTOR

TURNER CONSTRUCTION COMPANY

REBAR SUPPLIER

BROOKLYN REBAR

CONCRETE SUPPLIER

EMPIRE TRANSIT MIX

ARCHITECT

GOLDSTEIN, HILL & WEST ARCHITECTS

STRUCTURAL ENGINEER

WSP CANTOR SEINUK

228 E 45th St #3 New York, NY 10017
Sylvian Marcus 212.687.9888



NEW YORK CITY HIGHRISE CARPENTERS LOCAL UNION 212

**395 HUDSON STREET - FIRST FLOOR
NEW YORK, NEW YORK 10014**

PHONE: 646.201.9865 ★ FAX: 212.574.3319 ★ INFO@LU212.COM

