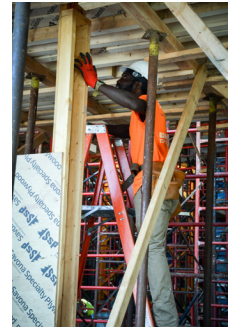


CASE STUDY

New York City Highrise Carpenters Local Union 212



FORESTCITYRATNER
COMPANIES



550 Vanderbilt Ave Brooklyn - Pacific Park



A 19 Story , 360,000 sq ft 278-unit building offer a slew of upscale amenities, including a library, a lounge with a fireplace, pet grooming rooms, and private storage.

REINFORCED CONCRETE
SUPERSTRUCTURE
CONTRACTOR

DiFama Concrete Inc
131 Imlay Street
Brooklyn, NY
Joseph Fama / Anthony DeLuca
(718) 403-9216
anthonyd@difamaconcrete.com

DEVELOPER

FOREST CITY RATNER COMPANIES
1 MetroTech Center
Brooklyn, NY 11201
718-923-8502
Robert Sanna

GENERAL CONTRACTOR

PLAZA CONSTRUCTION

REBAR SUPPLIER

IMT STEEL

CONCRETE SUPPLIER

FERRARA BROS.

ARCHITECT

COOKFOX

STRUCTURAL ENGINEER

WSP CANTOR SEINUK
228 E 45th St #3 New York, NY 10017
Sylvian Marcus 212.687.9888



**NEW YORK CITY HIGHRISE CARPENTERS
LOCAL UNION 212**

**395 HUDSON STREET - FIRST FLOOR
NEW YORK, NEW YORK 10014**

PHONE: 646.201.9865 ★ FAX: 212.574.3319 ★ INFO@LU212.COM

